

# Bitseye

Bitseye is designed to monitor the telecom traffic, this fantastic tool is ready to monitor any softswitch of the world, it can help the telecom people to keep eyes on their profit, cost, revenue, destination minutes volume, ASR/ACD etc. It can aggregate the data from multiple softswitches which will make the management easy.

## Dashboard

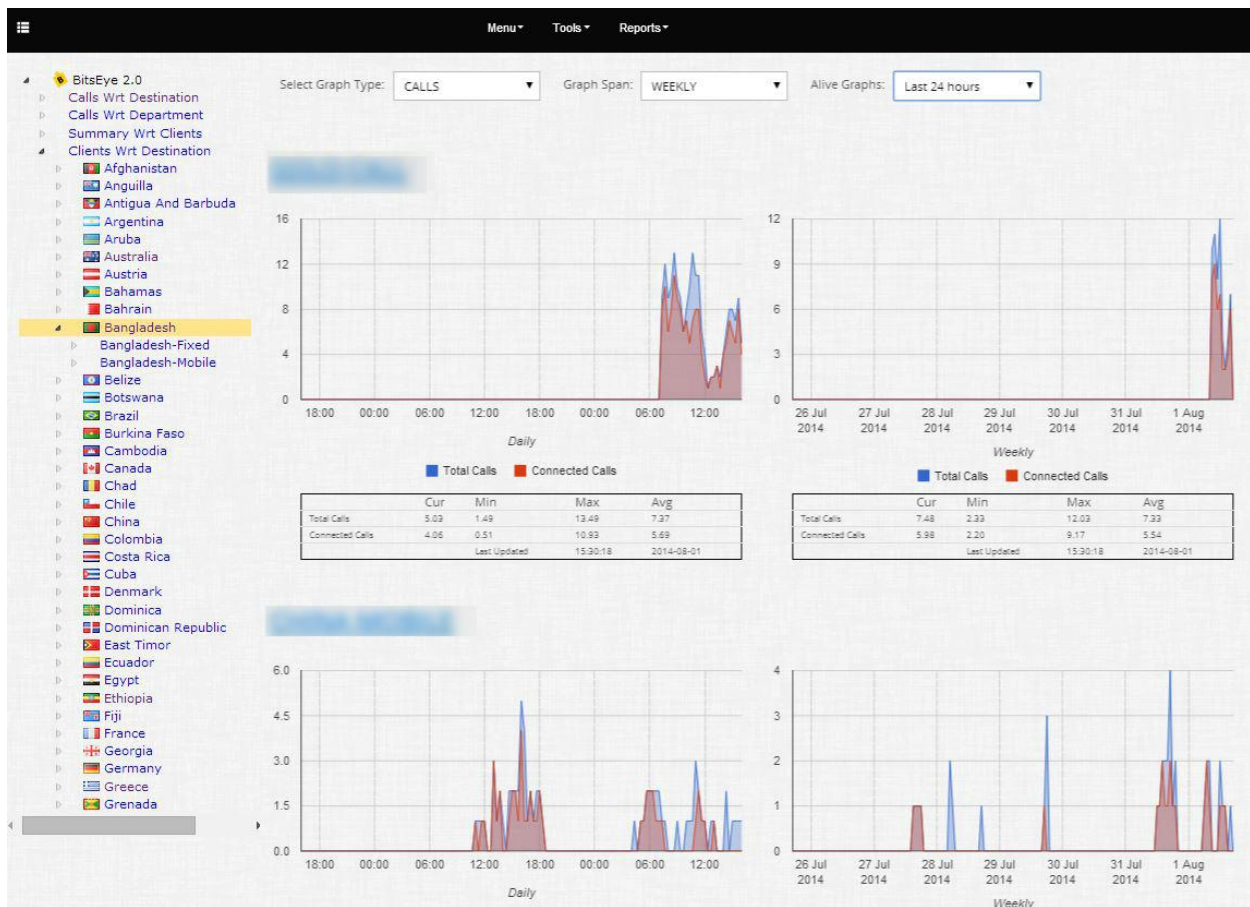


## Traffic trend monitoring

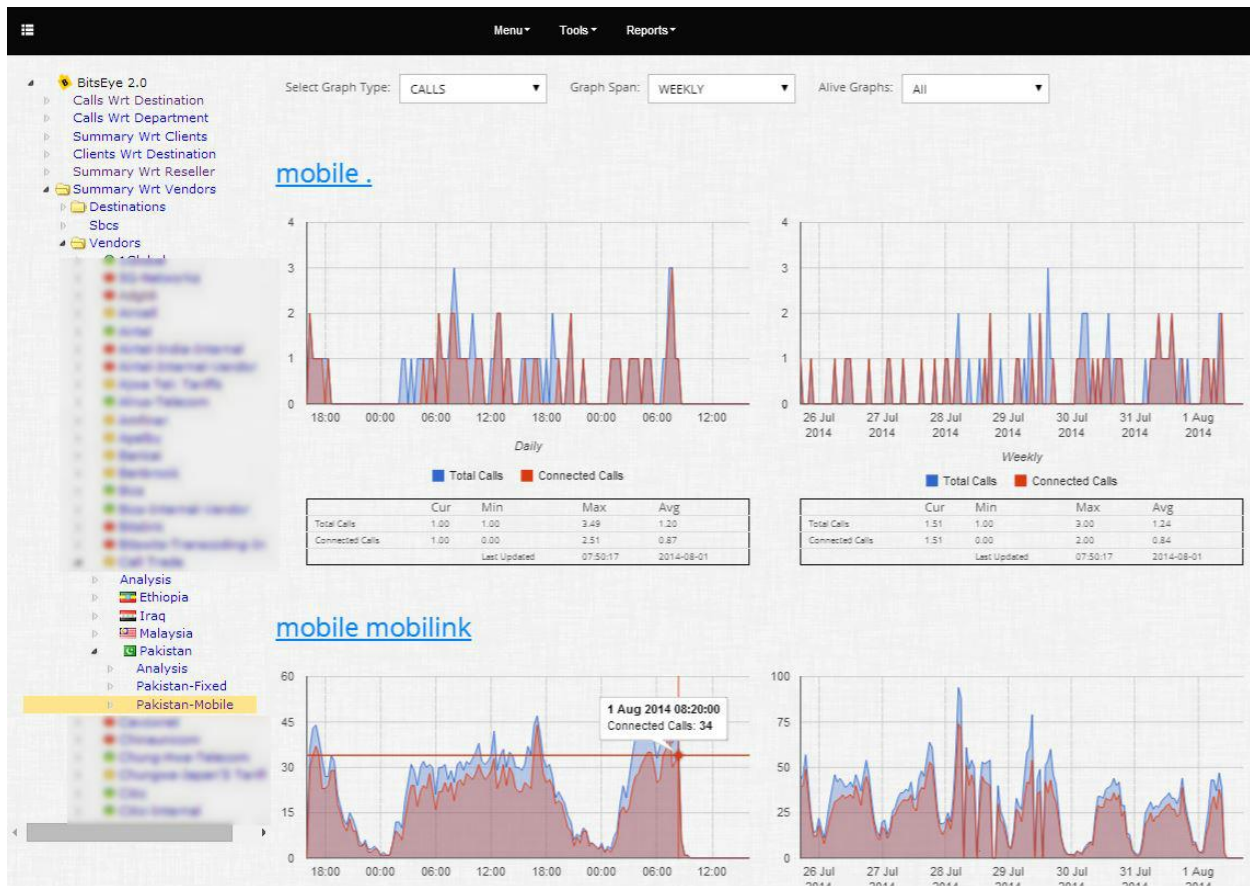
All the graphs of the bitseye is interactive and it provides near real time stats.



One can monitor for which destination who are sending traffic and who are not ☺...it gives you power to maintain the client.



One can monitor the traffic/stats (commercial/technical) trend of the traffic for client as well as vendors.







BitSeye has much more to explore...launching of this exciting product is expected in sep 2014.